

2J0102-2.4-C115N

2.4 GHz ISM Connector Mount

Key Features

2.4 GHz ISM

- 2410-2490 MHz

Connector Mount

Low Profile

Ground Plane Dependent

Dimensions $\varnothing 9.5 \times 56$ mm



1. Antenna and electrical specifications

Parameters	2.4 GHz ISM Antenna
Standards	WiFi, BT, ZigBee, ISM
Band (MHz)	2400
Frequency (MHz)	2410-2490
Return Loss (dB)	~-8.4
VSWR	~2.2:1
Efficiency (%)	~68
Peak Gain (dBi)	~3.6
Average Gain (dB)	~-1.6
Impedance (Ohm)	50
Polarisation	Linear
Radiation Pattern	Omni-Directional
Max. Input Power (W)	25
Connector Type	RP-SMA-Male Standard

Antenna Measurement Conditions:

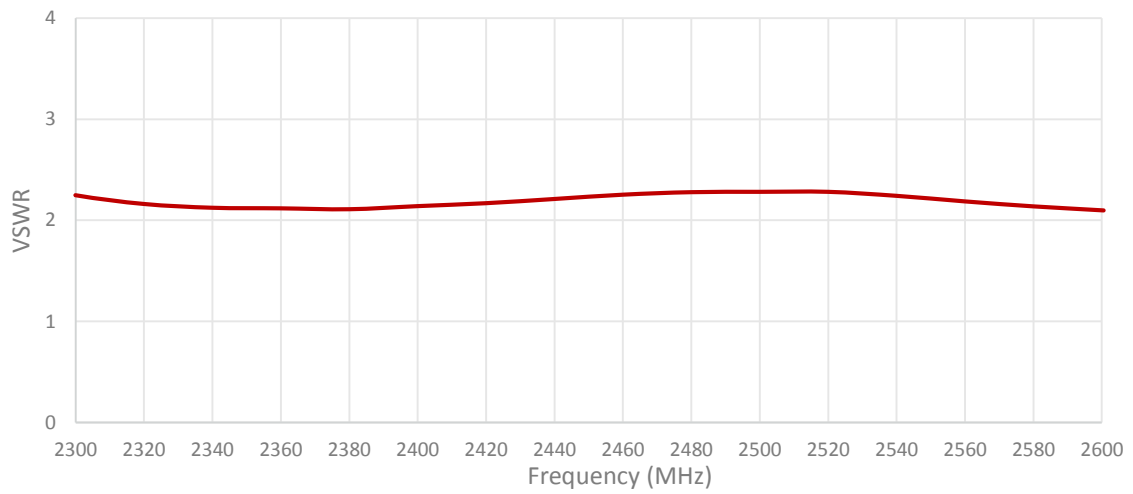
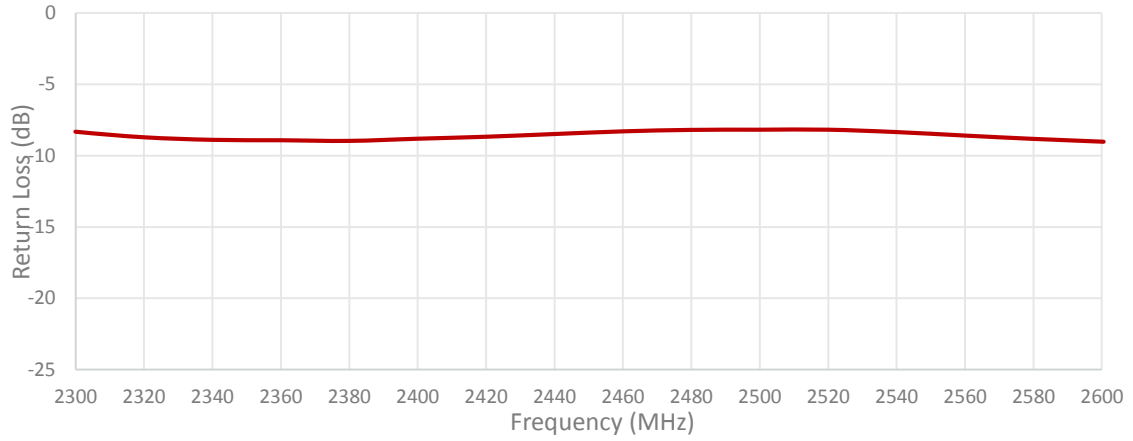
Mounted on Ground Plane of 70x35 mm

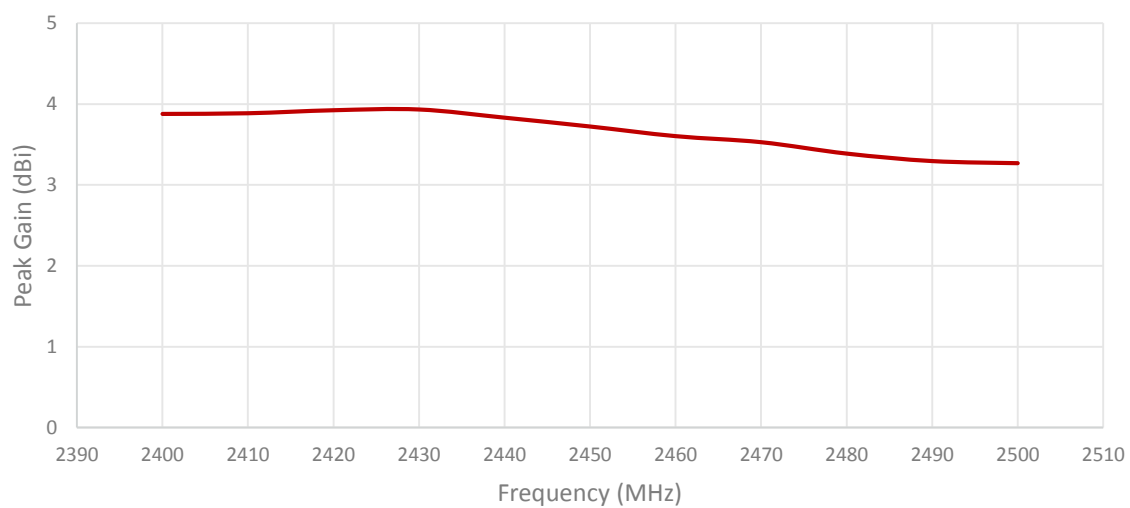
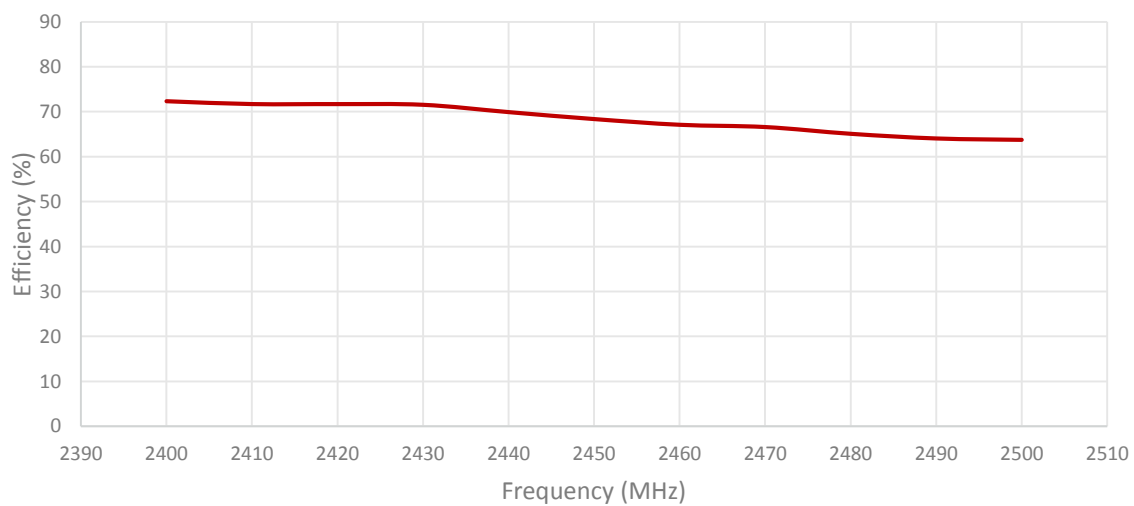
Measured in Certified CTIA 3D Anechoic Chamber

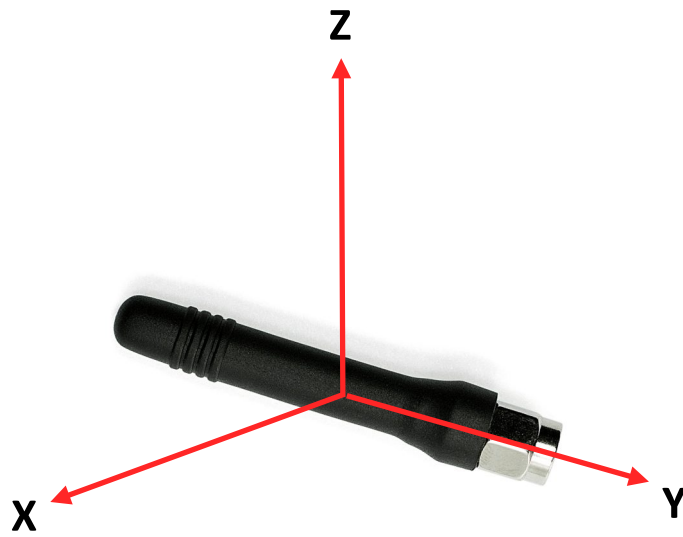
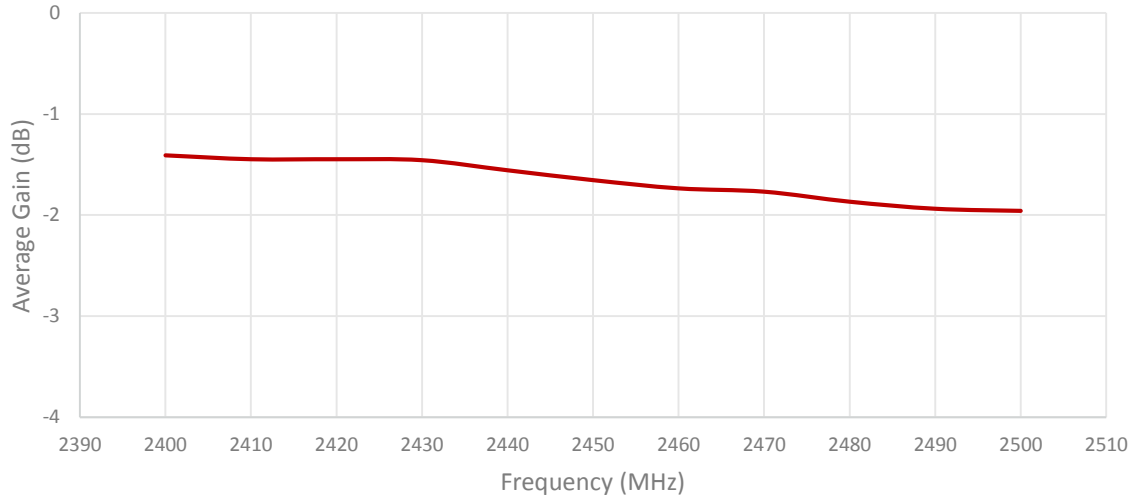
2. Mechanical and environmental specifications

Specifications	2J0102-2.4-C115N
Mounting Type	Connector Mount
Dimensions (mm)	Ø 9.5 × 56
Radome	TPE
Radome color	Black
Operating Temperature (C)	-40 to +85
Storage Temperature (C)	-40 to +85
Substance Compliance	RoHS

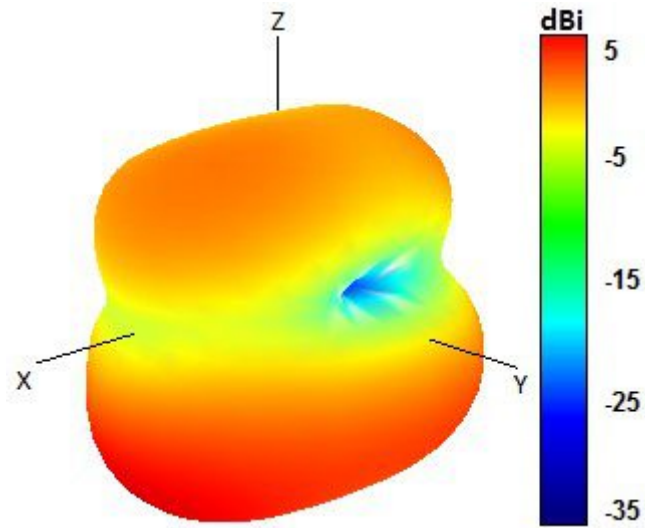
3. Antenna parameters





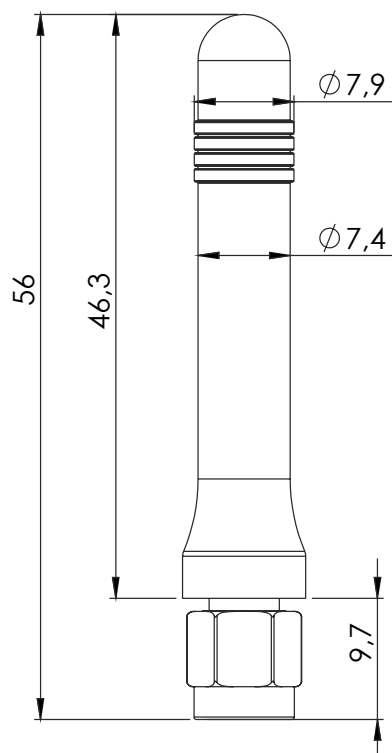
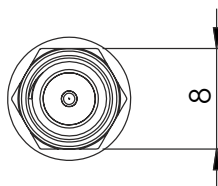


Radiation pattern reference



2450 MHz Radiation pattern

4. Antenna drawings



5. Antenna Images

